

USER MANUAL OF WELLINGTON SHEEP SHEARING MACHINE



1. Introduction

Wellington sheep shearing machine provides more practical and quick shearing on farms with an average of more than 100 sheep. Due to the fact that the motor and the handle are independent of each other, the handle is lightweight and allows the user to work more comfortably in the shearing process. Electric motor, handle, inner wire (2 pcs), outer shaft, user manual, thin rope (to start-stop the motor), thick rope (for hanging the motor), screwdriver, comb (2 pieces), blade (4 pieces) are in the set.

After reading the user manual, the materials in the set content are checked and installed. The machine is started in accordance with the operating instructions.

2. Instructions

2.1 General instructions

Manual reset of motor protection

When the voltage is low, the motor has overload protection to prevent damage to the motor. If the voltage falls below 150VAC, the protective circuit breaker switches off the motor.

If the voltage is low, the overload protection must be reset manually to restart the motor. The red button on the motor terminal box must be pressed, the machine can be started again when the voltage returns to normal.

Lubrication of inner wire

The inner wire is removed from the outer shaft (no dust or dirt on it.) It should be lubricated with high quality grease evenly. It is placed in the outer shaft by being careful in the right direction.

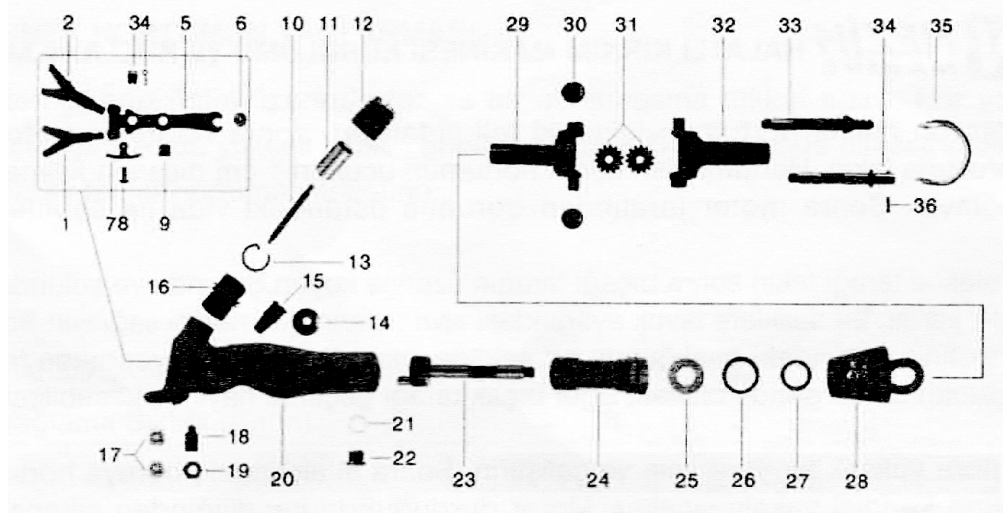
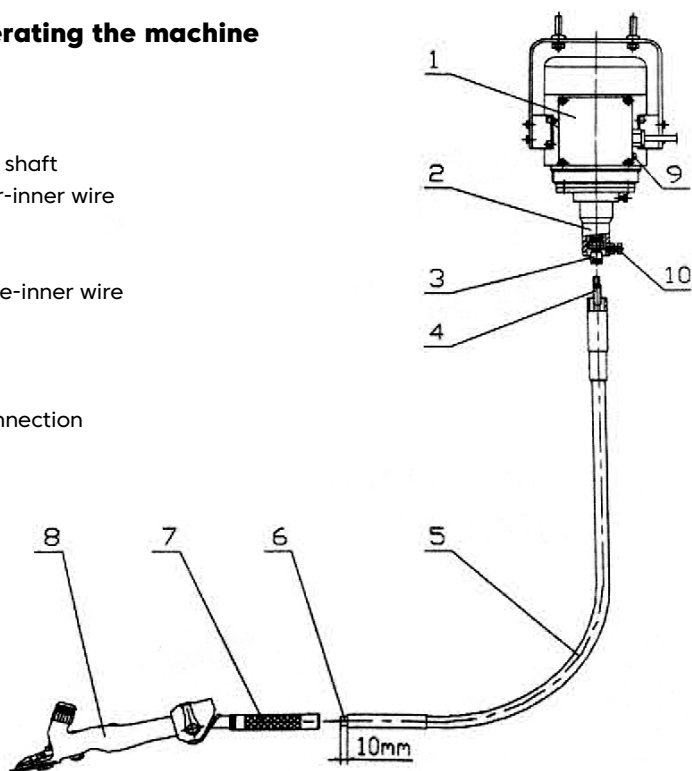
2.2 Safe operating instructions

- Before using the machine, make sure that the following instructions are read and understood.
- As long as the machine is used in accordance with the instructions, it is not dangerous for people and animals.
- Installation is quick and easy.
- All controls are tested at the manufacturer.
- Only authorized and trained personnel should use the machine.
- The machine must be operated from the grounded plug. The ground line is a measure taken to prevent electric shock to the user in case of electric leakage.
- Shearing process should be done on dry ground and the machine must be stored in a dry place without moisture when the shearing process is finished.
- Any spare parts of the machine must never be washed.
- Use lubricant SAE30 for machine lubrication.

3. Setting up and operating the machine

3.1 Content

1. Electric motor
2. Connection pipe of outer shaft
3. Connection part of motor-inner wire
4. Inner wire
5. Outer shaft
6. Connection part of handle-inner wire
7. Connection pipe
8. Handle
9. Protection of motor
10. Screw of outer shaft connection



No	İsim	No	İsim
1	Chickenfeet, Left	21	Inner Gasket
2	Chickenfeet, Right	22	Cover Cap of Handle
3	Tension Pin Cup	23	Crank Spindle
4	Tension Pin Spring	24	Long Bush
5	Fork Body	25	Spring Washer
6	Roller	26	Big Gasket
7	Retaining Spring	27	Small Gasket
8	Cross Recess Head Screw	28	Joing Guard
9	Center Post Cup	29	Inner Joint
10	Tension Pin	30	Joint Cap
11	Tension Sleeve	31	Cog
12	Tension Nut	32	Outer joint
13	Tension Retaining Ring	33	Worm drive
14	Cover Cap	34	Pin drive
15	Safety Screw	35	Joint spring
16	Thread Bush	36	Pin
17	Comb Screw		
18	Center Post		
19	Center Post Nut		
20	Handle		

3.2 Starting the machine

- Remove the electric motor from the box.
- Connect the inner wire to the motor.
- The outer shaft must be fitted after the inner wire is fitted.
- The connecting pipe must be installed in the rear part of the handle.
- The motor must be operated in a high place and made after the electrical connection of the machine.
- The motor will stop when the rope attached to the motor switch is pulled again.
- When the motor is stopped, the handle will be separated from the outer shaft when turned around the outer shaft.

Screw the inner wire into the shaft of the motor, then insert the outer shaft into the end of the motor. Make sure the tip of the shaft is 1 cm away by pushing the shaft forward. Then fasten it with the screw on the top of the shaft by the motor.

Put the comb on the handle and then put the blade on the comb. There are two holes on the right and left, so make sure that the pointed ends of the chicken feet pass through these holes. Then lightly tighten the cap on the handle. The comb should be 5 mm behind the blade when performing these operations.

Hang the motor up and operate. Then insert the shaft into the connection part of the handle. When the motor is stopped, the handle will separate from the shaft.

Warning: Oil should be placed through the hole in the center of the handle.

Warning: The rear gears must be lubricated with grease.

Warning: The combs and the blades must be lubricated every ten minutes.

Warning: The wire inside the outer shaft must be greased every two months.

Warning: Remove the screwdriver head plug on the back of the handle and put oil into it.

Warning: Do your work on the dry wood surface.

4. Errors, causes and solutions

- Blades do not cut.

The blades may be blunted after shearing.

+ Blades must be sharpened or a new one must be purchased.

Warning: If the life of the blade is to be longer, the animal's wool must be clean. Dirt between the wool blunts the blades more quickly.

- It's warming up.

If the blade tightening adjustment is made too much, the handle is heated and the motor is forced.

+ Blades should not be tightened too much.

A sufficient amount of oil was not added to the handle oil reservoir.

+ The hand must be regularly lubricated.

5 . Warranty

Product warranty is only valid when the product is used in a correct and proper manner.

The warranty period is 2 (two) years from the date of delivery.

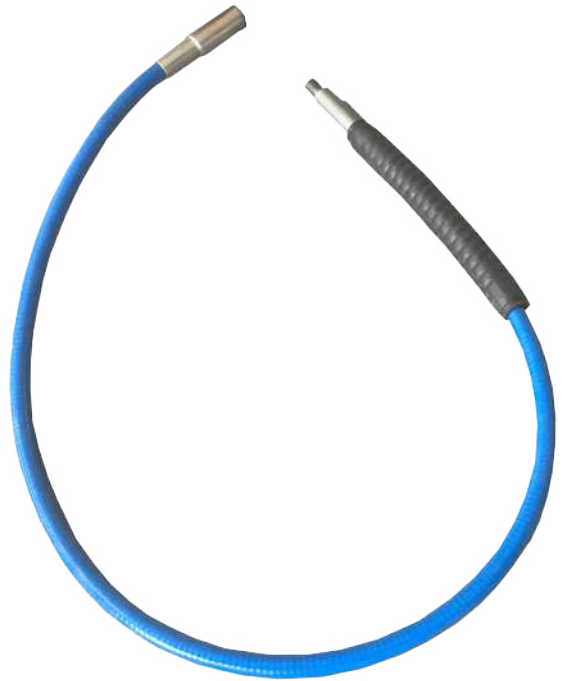
The warranty covers defects arising from the manufacturer and reported to the manufacturer within the warranty period. It only includes the cost of spare parts used to remedy faults caused by manufacturing faults.

The transportation costs that may arise due to the labor costs and the costs of replacement of defective parts or materials related to periodic maintenance are not warranted.

The warranty is void if repair is carried out without the knowledge of the manufacturer.

Damage caused by the neglect of the maintenance and cleaning of the product, damages caused by the product intentionally, damage caused due to misuse, improper electrical components (such as low or high voltage) or damage caused by overloading the product are not covered by the warranty.







USER MANUAL OF WELLINGTON SHEEP SHEARING MACHINE

ENKA TARIM HAYVANCILIK VE İNŞAAT SANAYİ TİCARET LİMİTED ŞİRKETİ

İTOB OSB. 10017. Sokak No: 3 - 5 35470

Tekeli - Menderes - İzmir - Türkiye

phone: +90 232 799 00 50

web: www.enkatarim.com

e-mail: info@enkatarim.com

