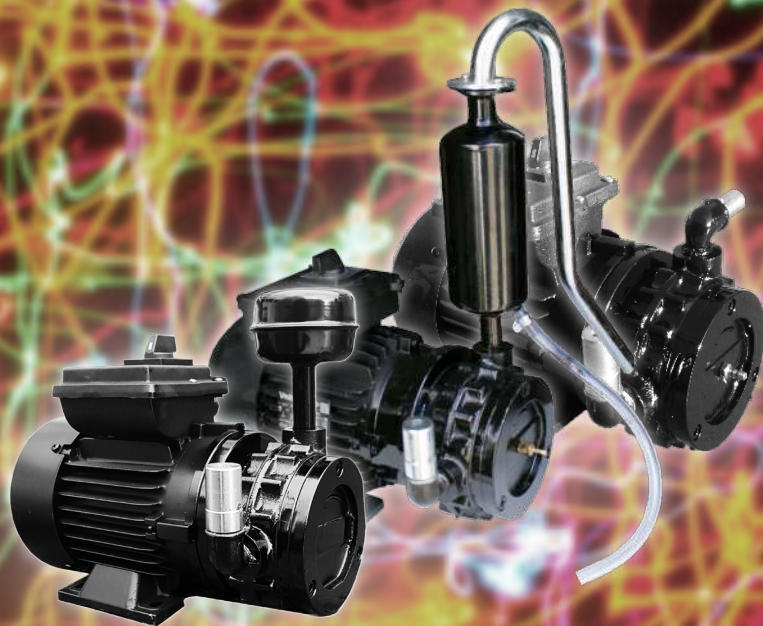


VACUUM PUMPS AND ELECTRIC MOTORS USER MANUAL



Vacuum pump of milking machines

The milking machine vacuum pump consists of the following products;

1. Electric motor
2. vacuum pump (main body, rotor, flange, cover, pallets)

1. Electric motor

0.55 kW 220V 50 Hz electric motor is used as standard.

An optional 0.75 kW and 1.1 kW electric motor is used.



0.55 kW



0.75 kW



1.1 kW

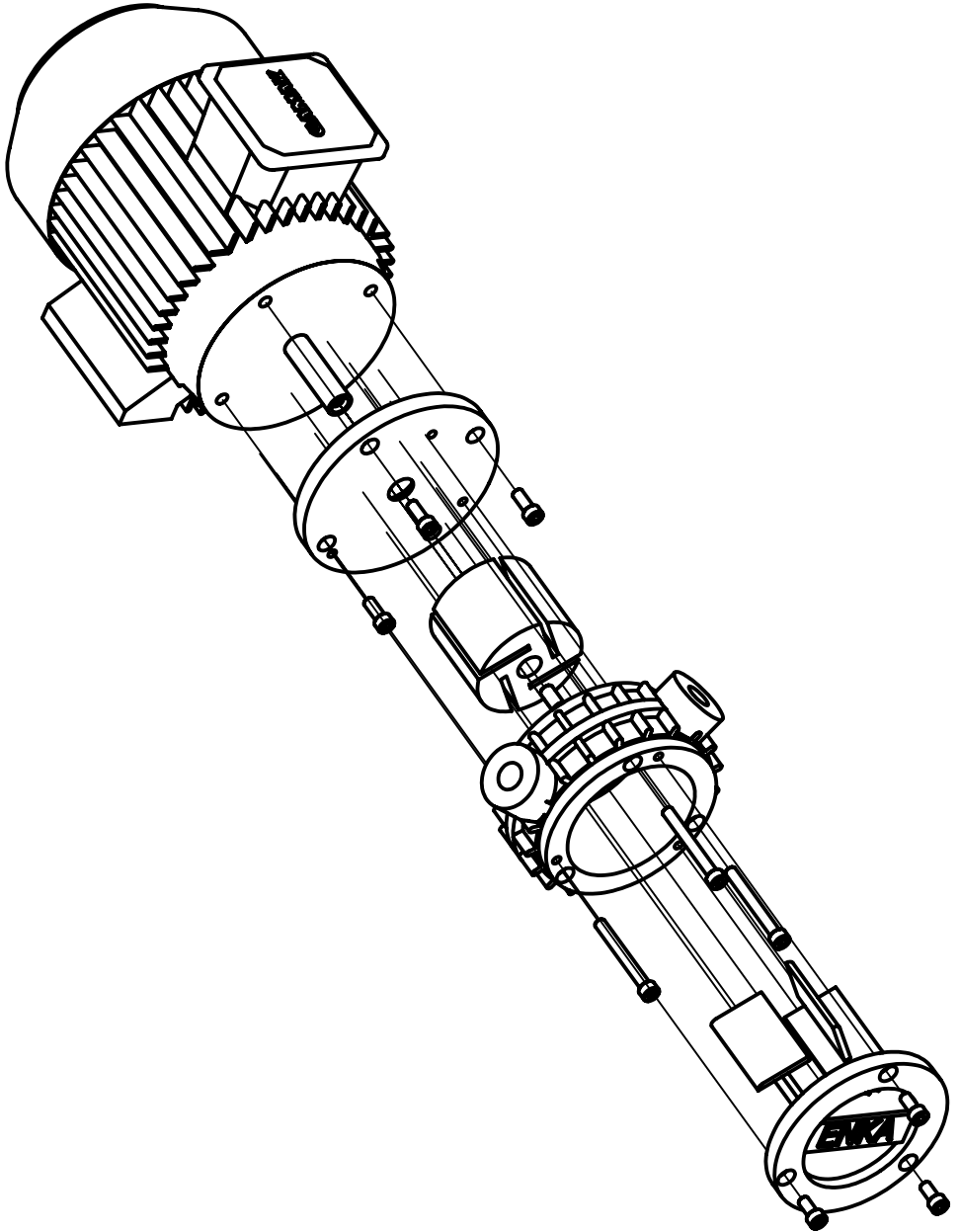
2. Vacuum pump

The 70 mm pump is used as standard. Optionally, 80, 85 mm pumps are used.

The parts of the vacuum pump are as follows; main body, flange, rotor, cover, graphite pallet (for dry type pump), fiber pallet (for oil pump)

The dimensions of graphite and fiber pallets are 70 x 43 x 4.90 mm.





• **Body**



• **Flange**



• **Rotor**



• **Cover**



• **Graphite and fibre pallets**



Graphite pallets



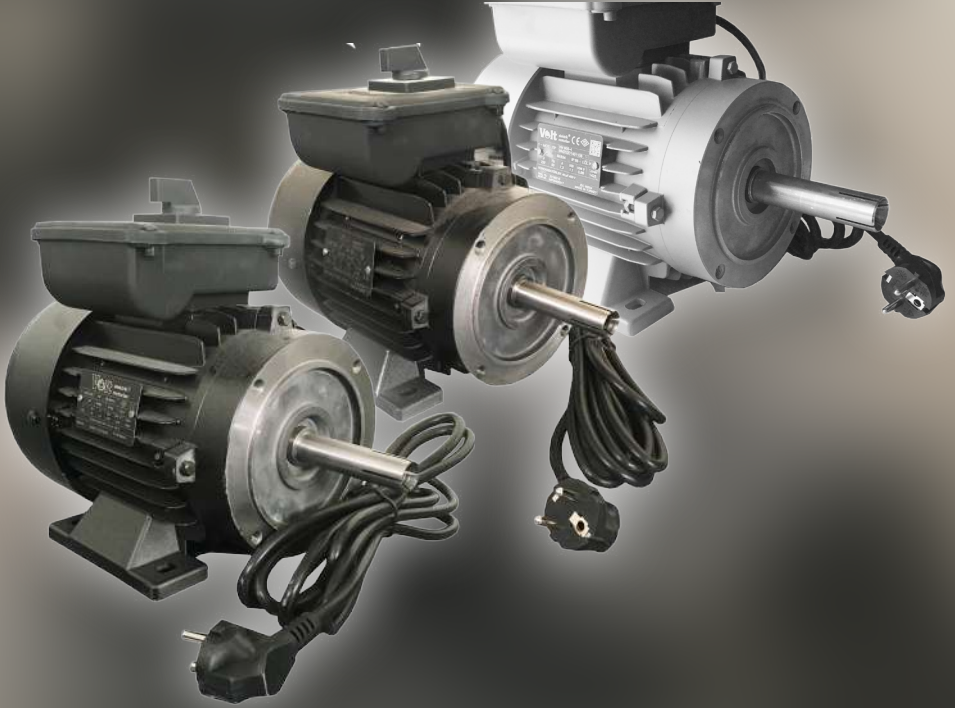
Fibre pallets

• **The screws used**

1. Large bolt (Imbus M8x70): Used for fixing the body.
2. Medium bolt (Imbus M8x20): Used for fixing the flange.
3. Small bolt (Imbus M8x16): Used for fixing the cover.
4. Rotor bolt (Imbus M10x20): Used for fixing the rotor.







ENKA Tarım Hayvancılık ve İnşaat Sanayi Ticaret Limited Şirketi

**İTOB OSB. Organize Sanayi Bölgesi 10017. sokak No: 3
35470 Tekeli / Menderes - İzmir**

+90 232 799 00 50 / www.enkatarim.com